

Contents

List of Works

Selected Works

- Alba Boat
- Waissbluth House
- Km. 0 Food Court
- Chile España Apartments
- Davis Auto Pavilion
- Fabriex Headquarters
- Manquehue Apartments
- Paz House
- Vantrust Headquarters
- Maristany House
- Quinchamalí Apartments

Published Works

Info

Works & Projects

Selected 2000-08

2000-01

Weissbluth House
Tunquén,
Casablanca, Chile



An isolated autonomous vacation house in a natural context lacking basic services and infrastructure.

2000-01

Alba Traditional (Chiloé) Boat
Dalcahue,
Chiloe, Chile



A traditional native timber hand-made boat equiped with top technology intended for high-end alternative tourism.

2000-01

Kilómetro Cero Food Court
Providencia,
Santiago, Chile



Interior renovation of a protected downtown Santiago landmark building housing a medium size Food Court .

2002

ELG Boutique
Las Condes,
Santiago, Chile



Interior renovation, lighting project and furniture design for a small size women's boutique in a shopping mall.

2003-05

Chile España Apartment Building
Ñuñoa,
Santiago, Chile



Nine level apartment building in a traditional residential neighborhood in Santiago in an extremely narrow site scheme.

2003-05

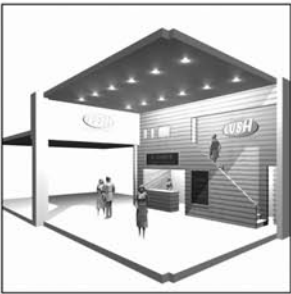
Davis Autos Car Sales Pavilion
Vitacura,
Santiago, Chile



A car sales pavilion and low impact service garage in one of Santiago's most important commercial avenues.

2003

Lush® Store Competition
Las Condes,
Santiago, Chile



A prototype for the first chilean based Lush® Cosmetic Store inside a shopping mall. Private competition.

2003

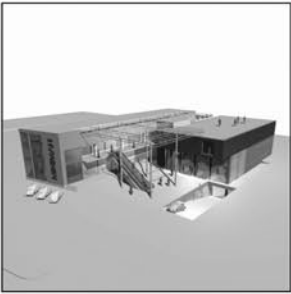
Fabriex Warehouse & Offices
Santiago,
Santiago, Chile



Office headquarters, warehouse and showroom for a heavy machinery sales company in downtown Santiago.

2003-04

Minimall Strip Center
Vitacura,
Santiago, Chile



Self commission for a small size open shopping center (strip center typology) in an urban highly commercial context.

2003

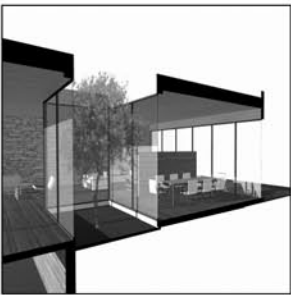
Automotora Siglo XXI Competition
Los Andes, Chile



Private competition for a multi-brand car sales pavilion and service garage in a suburban context at an Andean village.

2004

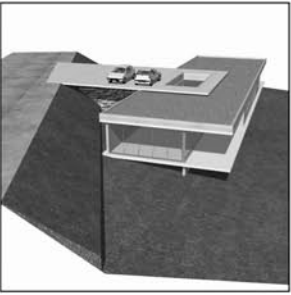
Razmilic House
Lo Barnechea,
Santiago, Chile



Single family house project in suburban Santiago. First of several patio study houses developed by the office.

2004

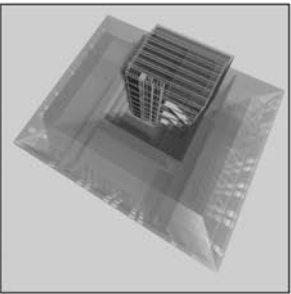
Radrigán House
La Reserva, Chicureo,
Colina, Chile



Single family house project in a natural context in an ecological private park. Second patio study housing project.

2004

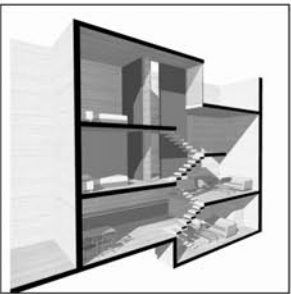
Unión Obrera Renovation Initiative
Cerro Cárcel,
Valparaíso, Chile



Renovation and restoration pre-design for a protected building site in Valparaíso housing low income families.

2004

Loft House
Cerro Concepción,
Valparaíso, Chile



Renovation and restoration design for an old protected house intended as a Loft Apartment project for sale.

2004-07

Manquehue Apartment Building
Las Condes,
Santiago, Chile



Medium size 10 level residential building in a main avenue in urban Santiago, commissioned by a large real estate company.

2004-07

Mosaic Apartment Building
Ñuñoa,
Santiago, Chile



Large size 25 level residential building in a main avenue in urban Santiago, commissioned by a large real estate company.

2005-08

Paz House
Los Dominicos,
Las Condes, Santiago, Chile



Large size single family house project in an urban context in Santiago. Part of the patio study houses developed by the office.

2007

Freire House
La Reina,
Santiago, Chile



Renovation and restoration design for a single family house in suburban Santiago. Architecture and furniture design.

2007

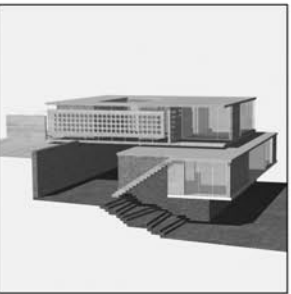
Van Trust Capital Private Banking
Las Condes,
Santiago, Chile



New office headquarters for a stock trader and private investment banking company at a pre-existing urban office building.

2007 >

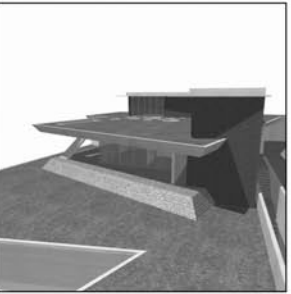
Maristany House
Quinchamalí, Las Condes,
Santiago, Chile



Single family house project in a suburban context in Santiago. Part of the patio study houses currently under construction.

2008 >

Figari House
Lo Curro, Vitacura,
Santiago, Chile



Single family house project in a burban context in Santiago. Part of the patio study houses currently at design stage.

2008 >

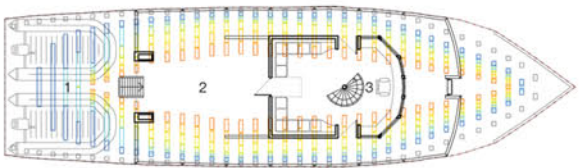
Quinchamalí Apartment Complex
Quinchamalí, Las Condes,
Santiago, Chile



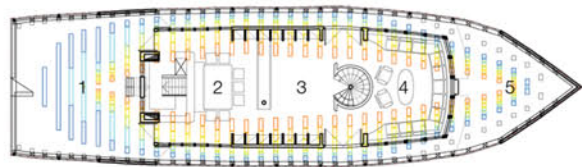
Residential apartment complex at a preexisting suburban park site. Large size apartment buildings currently at design phase.

Alba Boat

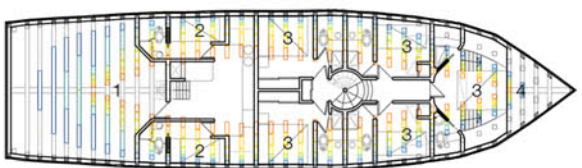
Dalcahue, Chiloé | Chile



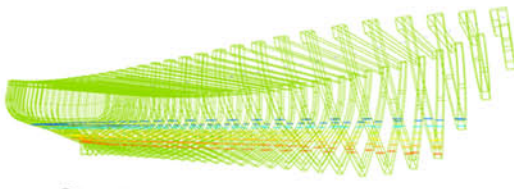
1 Raft Deck 2 Bridge Deck 3 Bridge
Bridge Level



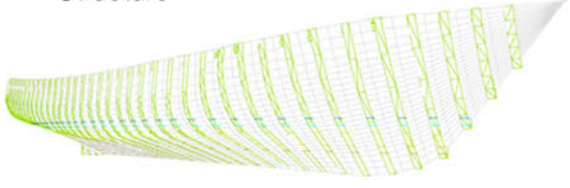
1 Quarter Deck 2 Dining Room 3 Hall 4 Living Room 5 Forecastle
Deck Level



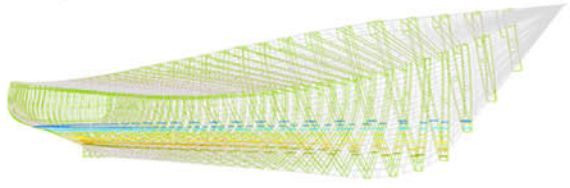
1 Machine Quarter 2 Crew Cabin 3 Passenger Cabin 4 Water Tank
Lower Deck Level



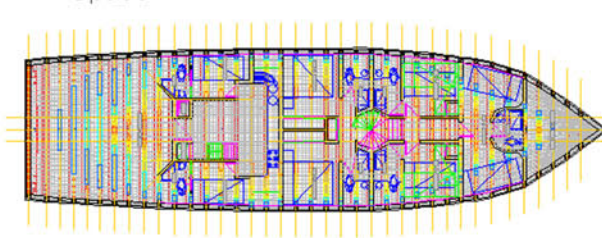
Structure



Skin



Space



PROJECT INFO

Type
Cruise Boat

Context
Natural

Lot Surface
N/A

Built Surface
2,000 sq. ft.

Main Structure
Native Timber

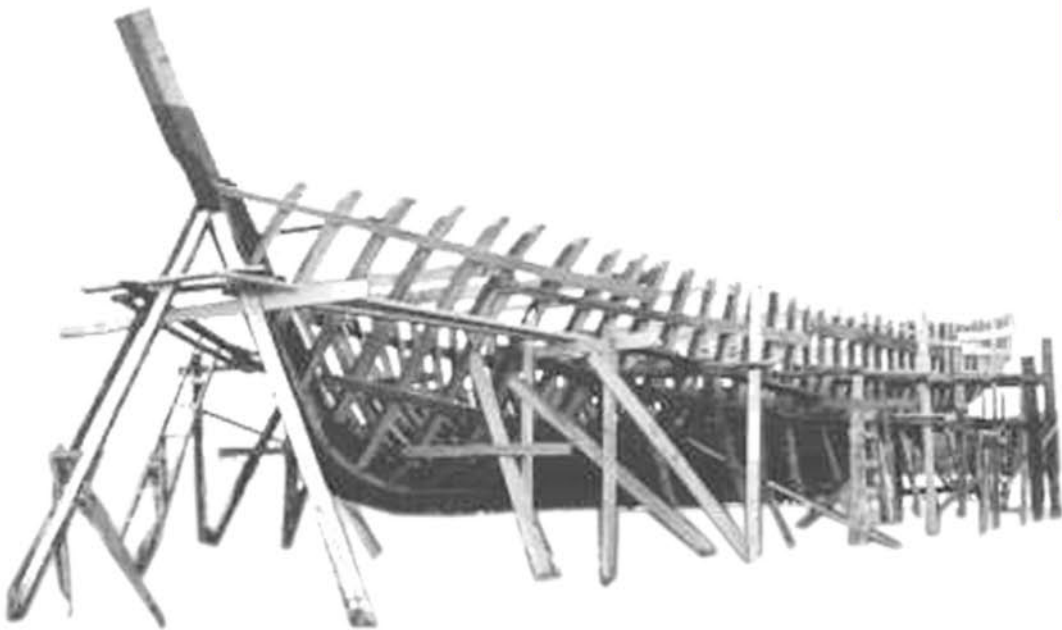
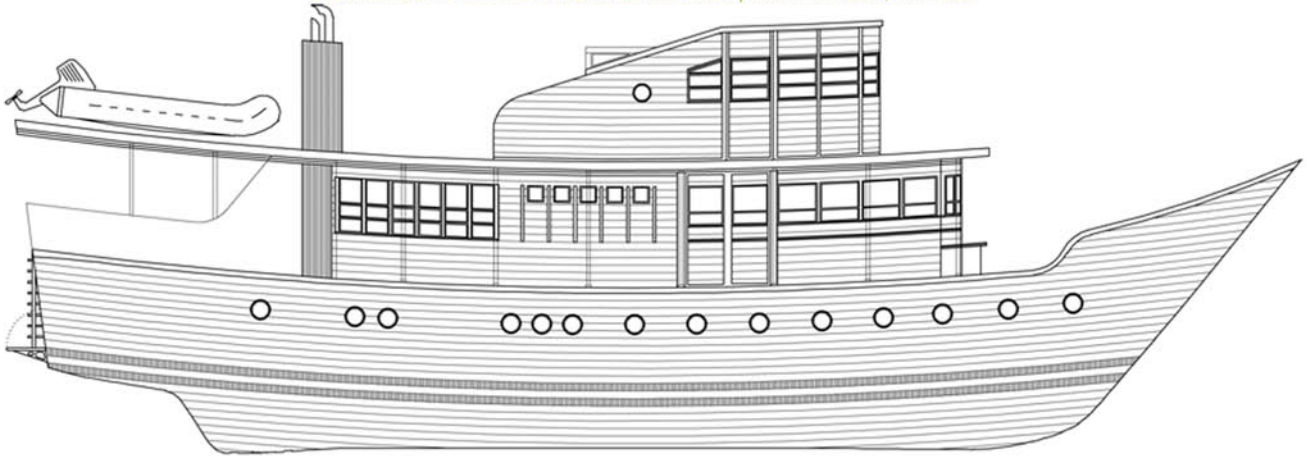
Year
2000-01

BRIEF The assignment's challenge was to effectively combine up-to-date marine and communications technology with traditional local craftsmanship, both essential parts of the final project, a high-end yacht intended for alternative tourism in the utmost south lands of South America. It was crucial to us to leave the wood untreated, just by protecting it with a first-rate lacquer and consequently exposing the structure in all its beauty and technique. Autonomy, vigor and efficiency were concepts ever present in every aspect of design from the basic structure to the finest detail. With a 12 passenger capacity, Alba became an advanced exercise in structure and final form as a combined single plastic self.



ALBA BOAT

Eduardo Berlin Razmilic Associated Architects | Catalina Pollak, Architect



Waissbluth House

Tunquén, Casablanca | Chile



AUTONOMY SUSTAINABILITY ORGANIC EFFICIENCY ENVIRONMENT



LA FACHADA PONENTE tiene grandes ventanales para dominar la vista al mar. El granos caligato de madera protege del exceso de sol, el que también se evita gracias a diversos esteros.

En el tranquilo sector de "El Rosario de Tunquén" se encuentra esta vivienda acristalada y de techo plano, que captura las vistas y juega con la pendiente del terreno. El arquitecto Eduardo Berlin Razmilic buscó que además fuera autosustentable, ya que en el lugar no hay luz ni agua.

Título: Luz Mario de la Vega Prost
Fotografía: Julio Mallard

A doce kilómetros del balneario de Quintay, en el Condominio "El Rosario de Tunquén", el arquitecto Eduardo Berlin (28) proyectó hace tres años una casa de tres pisos, que se terminó de construir recién en diciembre pasado. Con 180 m² edificadas, más 150 m² al exterior, toma la pendiente y se apodera del paisaje circundante, dominando visualmente desde San Alfonso del Mar, de Algarrobo, hasta Punta del Gallo de Tunquén.

Combinando madera, cristal y hormigón armados, la casa destaca en el agreste paisaje, en medio de arbustos de flora nativa que existen alrededor. Para evitar una costosa mantención del jardín, este fue formado por suculentas y piedras de cuarzo de una mina cercana. El proyecto quiso destacar las vistas hacia el mar, regulando la presencia excesiva de sol. Al mismo tiempo, maneja la idea de una casa donde po-

UNA TERRAZA DE MADERA rodea la piscina. Al fondo, se remarca por dos columnas de hormigón la zona donde se hacen los acedlos.

PROJECT INFO

Type
Private House

Context
Natural

Lot Surface
53,800 sq. ft.

Built Surface
2,500 sq. ft.

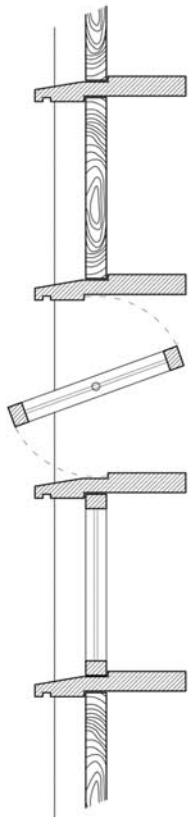
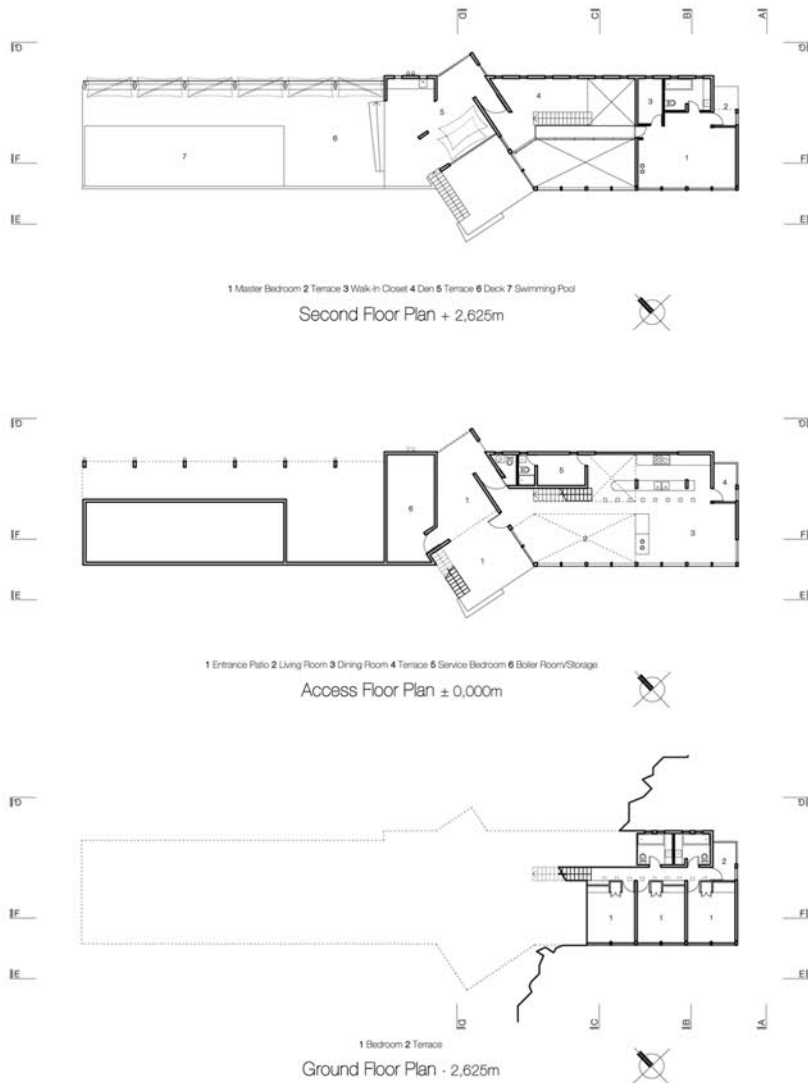
Main Structure
Concrete & Wood

Year
2000-01

BRIEF The house stands as a self-sufficient entity within a continuum, leaving the countryside unblemished as a result of lacking essential infrastructure. The house incorporates equipment that allow it to supply itself with utilities; the sheltered entrance arbitrates between the house's program and machine quarters. This space disrupts the linearity of the 130 feet-long volume that, by resting on the natural slope, relates horizontal planes to the ground. This scheme challenges the volume's compact and certain condition, and comes to replace the wealth of distribution that traditionally is achieved through the floor plan. The south-west façade manages the frequent conflict between establishing an open stance towards the ocean and minimizing solar radiation exposure.

WAISSBLUTH HOUSE

Eduardo Berlin Razmilic Associated Architects

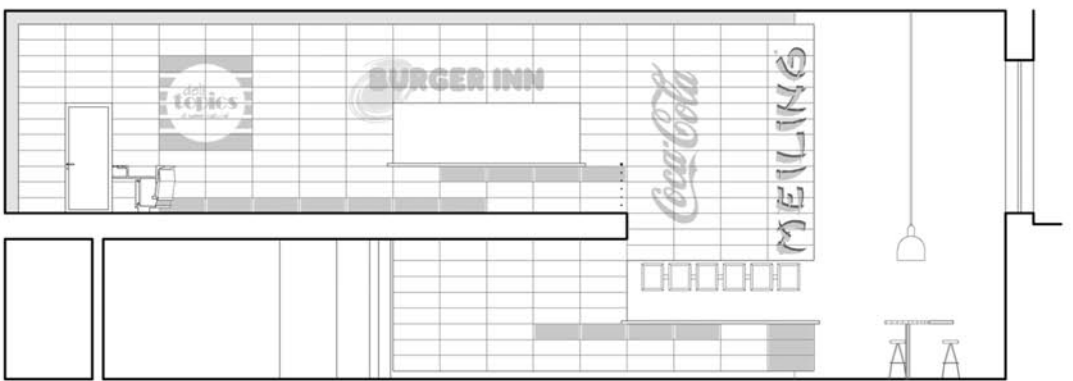
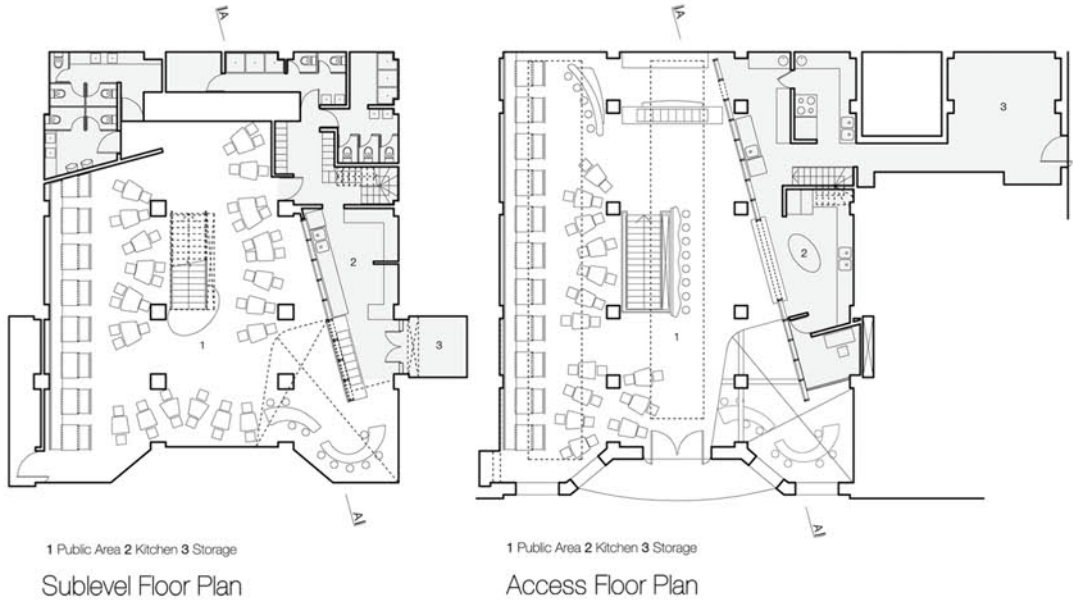
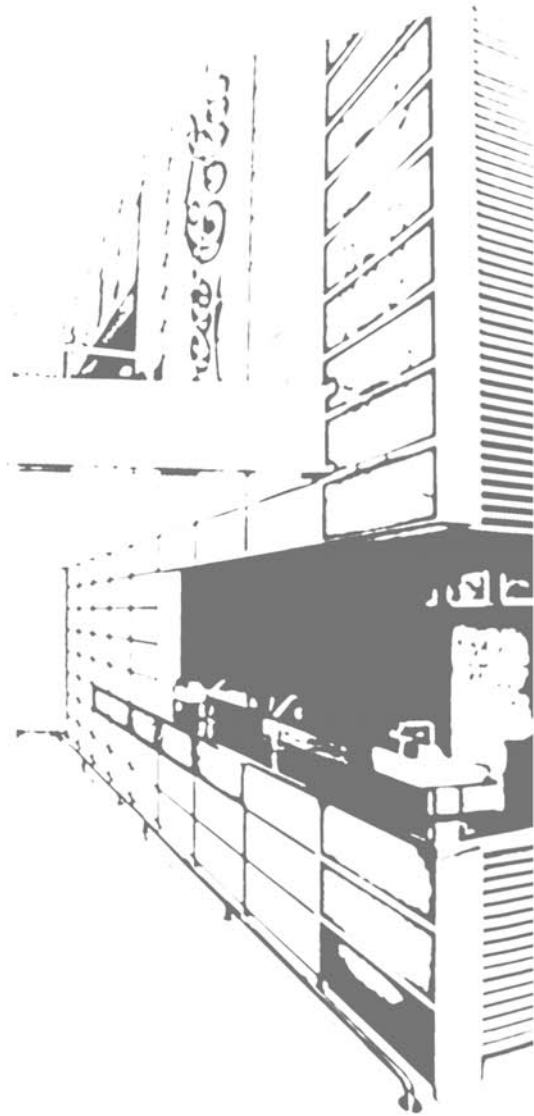


Built-in Shutter Detail



Km. 0 Food Court

Santiago, Santiago | Chile



PROJECT INFO

Type
Commercial Building

Context
Urban

Lot Surface
N/A

Built Surface
6,500 sq. ft.

Main Structure
Concrete

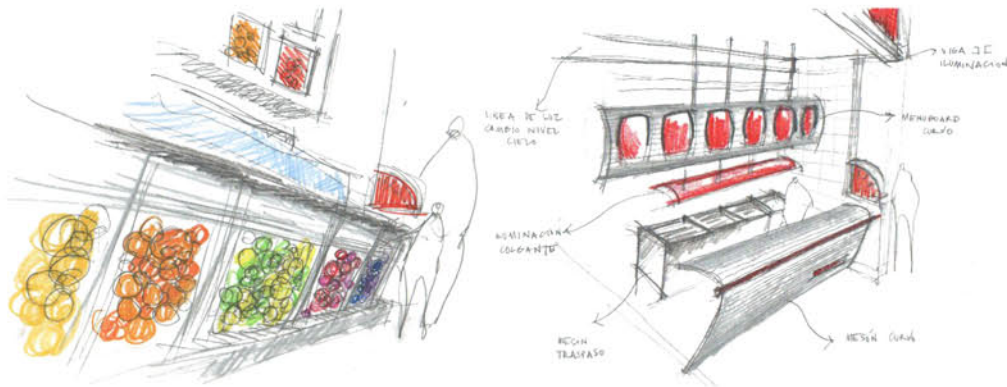
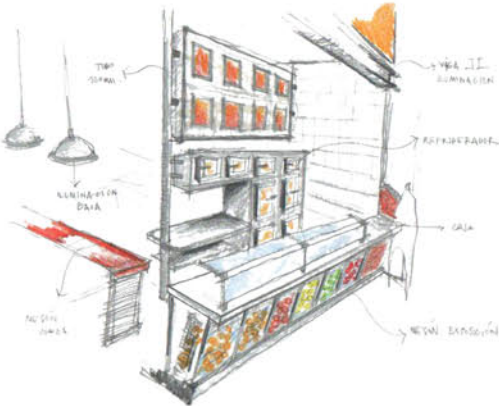
Year
2000

BRIEF_ By juxtaposing a diagonal two-level-high modular lit graphic glass wall to the preexisting early 20th century building structure, the project tries to evidence both realms without trying to blend them. The sublevel was disconnected and poorly illuminated and granting it with greater dignity was of importance; to this extent, disposing one of the three restaurants in the lower level floor and connecting them visually through an 18x18 feet perforation in the dividing slab were some of the operations proposed to incite the use said level. The furniture, decoration and general design was intended to reflect both a spatial fluidity and a clear differentiation between superimposed objects and preexisting structures.

KM. 0 FOOD COURT

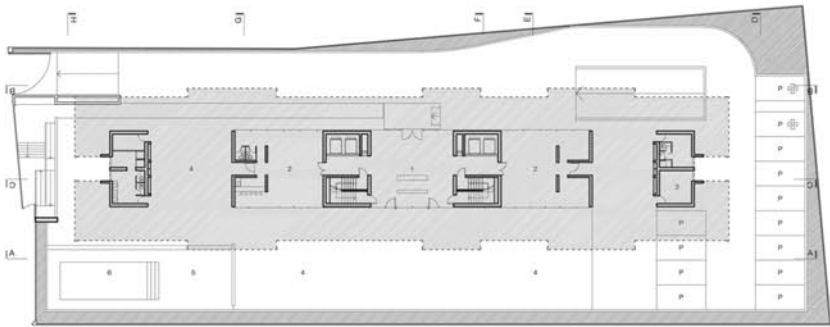
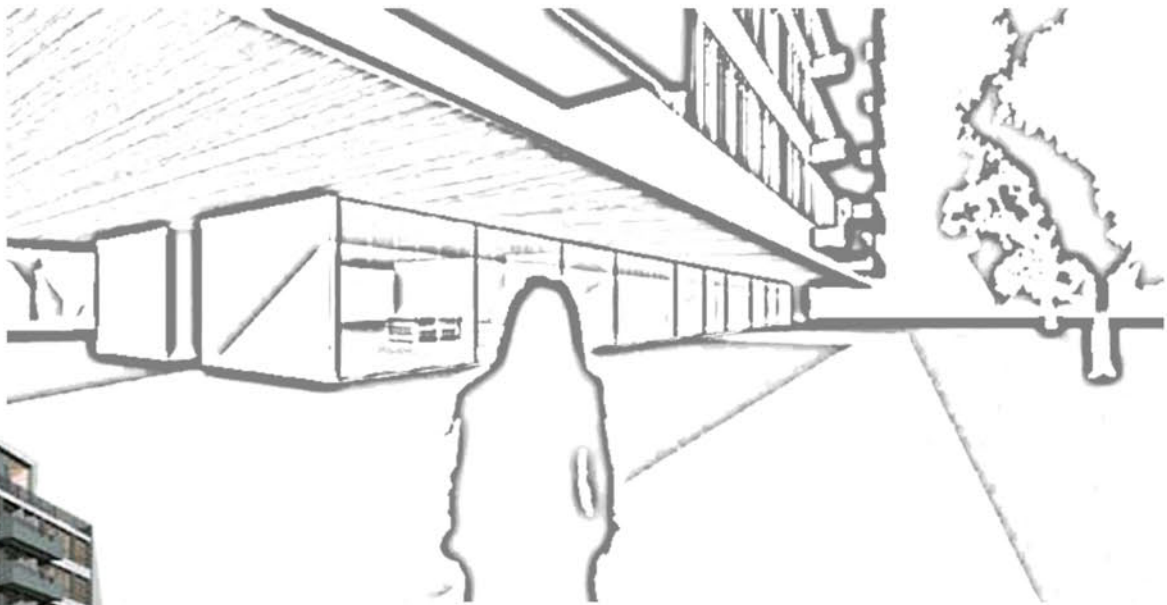


Eduardo Berlin Razmilic Associated Architects | Catalina Pollak, Architect as Collaborator



NEW
NOMES
SMEI
SAS
NOIS
SE
EXE
NO
A
INTE
GRATION
AR
RICH
A
TION
EXP
RES
SION
S
YS
TEM
S
ENV
IRON
MEN
T

Chile España Apts.
Ñuñoa, Santiago | Chile



1 Access Hall 2 Facilities 3 Laundry Room 4 Garden 5 Terrace 6 Swimming Pool

First Floor Plan



Typical Floor Plan (2nd - 7th)



Section D-D

Section E-E

Section A-A

PROJECT INFO

CHILE ESPANA APTS

Type
Private Housing
Context
Urban
Lot Surface
25,800 sq. ft.
Built Surface
100,000 sq. ft.
Main Structure
Concrete
Year
2003-05

BRIEF_ Determined by an extremely narrow site, the building is the result of our initial intention of liberating as much ground floor as feasible in order to create exteriors as wide as possible. The result was structurally demanding, as the 220x42 feet perimeter was supported by a much smaller disposition of load-bearing nuclei. Supporting this concept, these structures allow direct connection of both sides of the building through exterior spaces, thus accomplishing a spatially flowing street level that houses main facilities. The actual interior program occupation of the first floor amounts to as little as 8% of the site area, fully achieving the initial aim.



Eduardo Berlin Razmilic Associated Architects | Rodrigo Duque, Architect | Benjamin Paz , Paz Arquitectura



NEW URBAN INVESTMENT

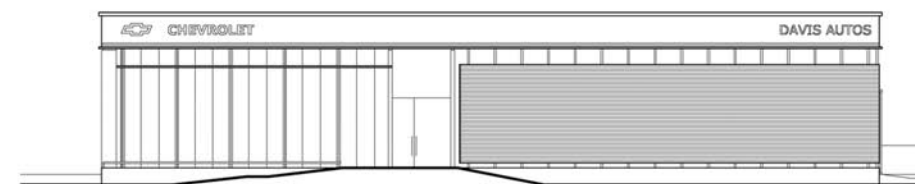
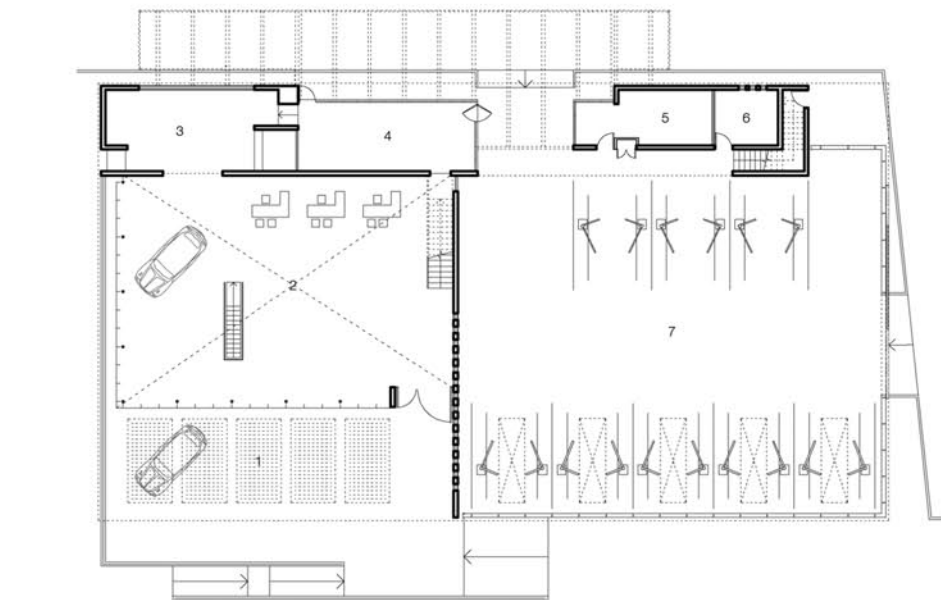
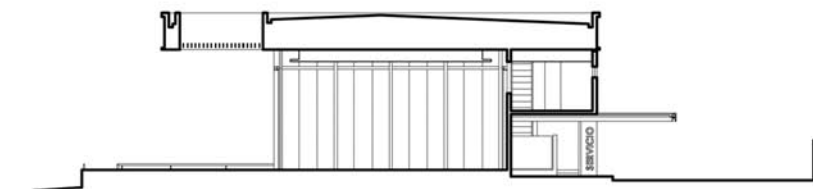
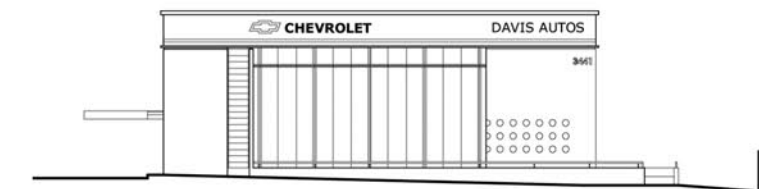
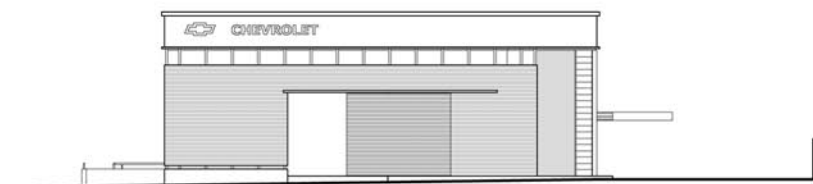
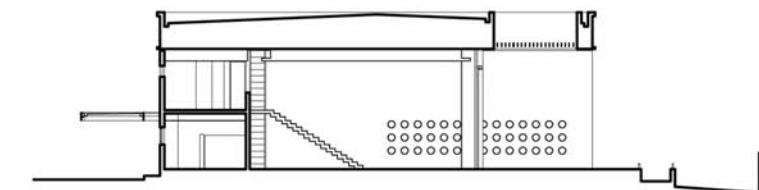
Davis Auto Pavilion
Vitacura, Santiago | Chile



Comment Here When Needed



PROGRAM ENVIRONMENT FUNCTIONALITY SYSTEMS SCALE CONTAINER



PROJECT INFO

Type
Commercial Building

Context
Urban

Lot Surface
30,100 sq. ft.

Built Surface
9,000 sq. ft.

Main Structure
Steel

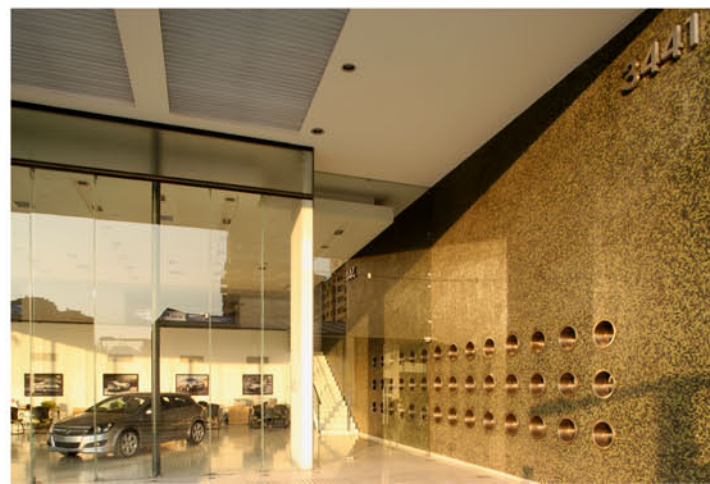
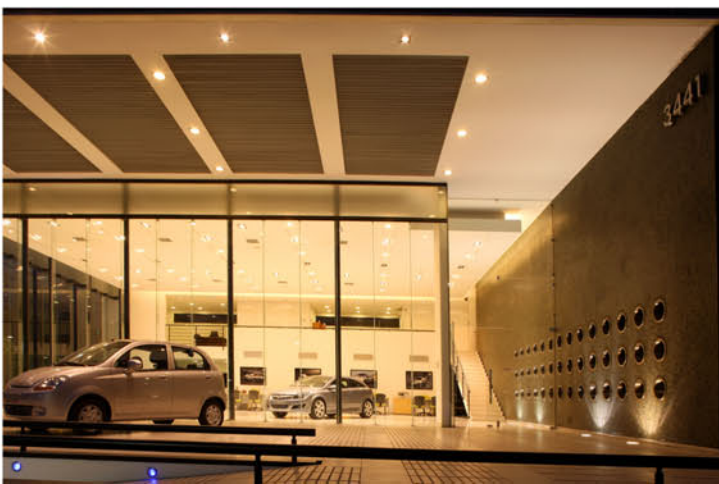
Year
2003-05

BRIEF The assignment was to integrate the service garage program to the sales pavilion in one single building, making the customer part of the whole process. The building was therefore conceived as a single steel-structure 20-feet high container, housing both sales pavilion and garage divided by a perforated wall. An adjoined concrete two-level building supports housing smaller offices, staff rooms, bathrooms, garage reception, etc. Plastically simple, both pavilion and garage are treated according to their use resulting in on a transparent glass box and a lightweight opaque skin tacitly revealing the auto service program.



DAVIS AUTO PAVILION

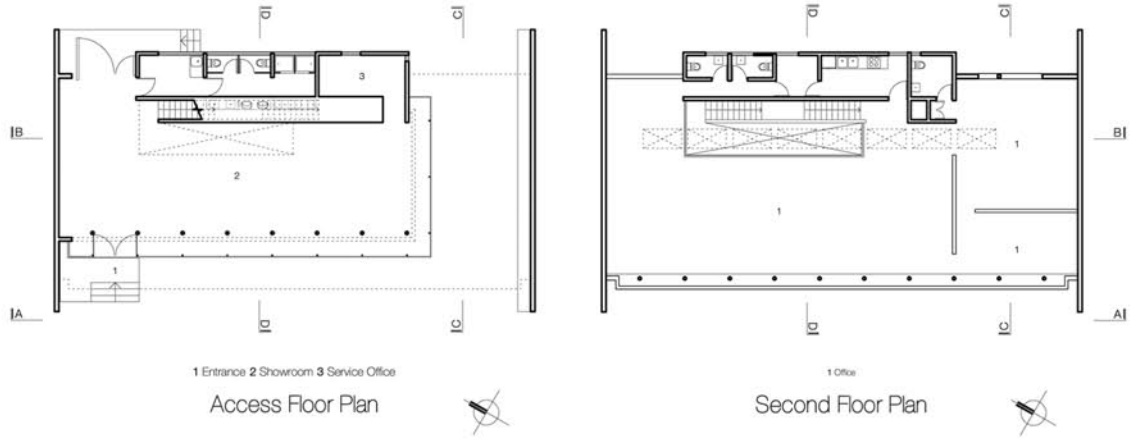
Eduardo Berlin Razmilic Associated Architects | Sandra Rusch, Architect as Collaborator



PROGRAM ENVIRONMENT FUNCTIONALITY SYSTEMS SCALE CONTAINER

Fabriex Headquarters

Santiago, Santiago | Chile



PROJECT INFO

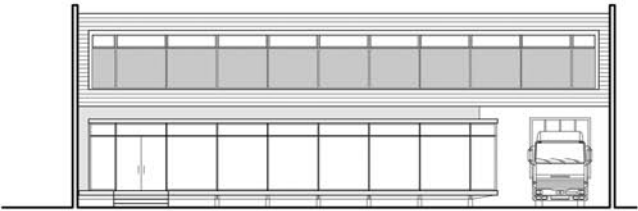
Type
Industrial Building
Context
Urban
Lot Surface
13,100 sq. ft.
Built Surface
4,000 sq. ft.
Main Structure
Steel
Year
2003

BRIEF_ Conceived as a truck loading platform the first level amounts to a "warehouse showroom". Coincidentally to these given height requirements, the second level, housing office quarters, extends from party wall to party wall, conforming the tunnel entrance with the necessary truck height clearance. The space in the back of this building is liberated intentionally for maneuvering and loading. Programmatically, the project was based on control conditions, rational lines, and a fluent relation between functions, allowing the different operations to successfully integrate. Special design was necessary to integrate required built-in furniture in the building's skin.

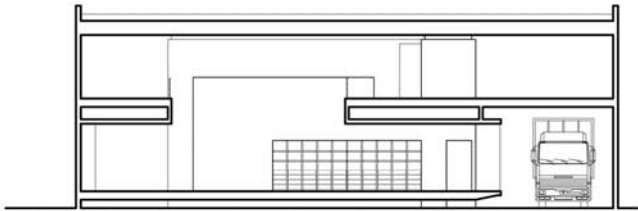
FABRIEX HEADQUARTERS



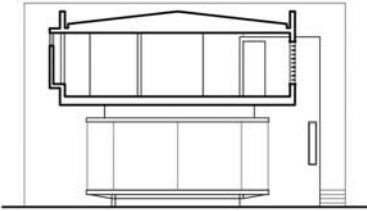
Eduardo Berlin Razmilic Associated Architects | Daniel Bebin, Architect as Collaborator



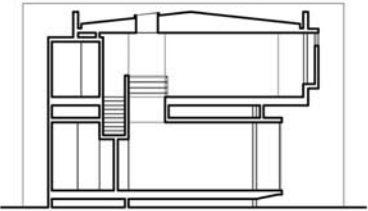
Section A-A



Section B-B



Section C-C



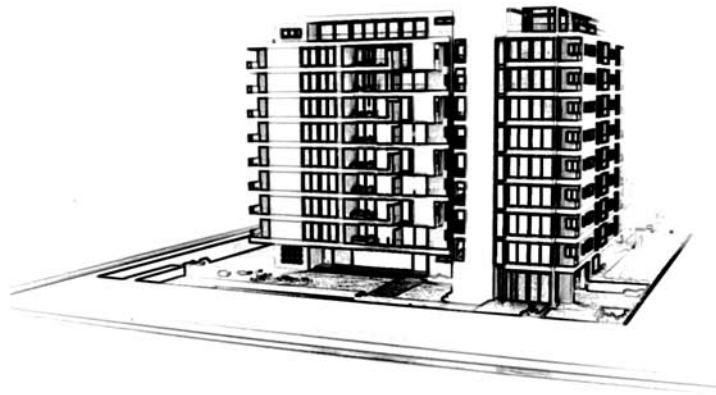
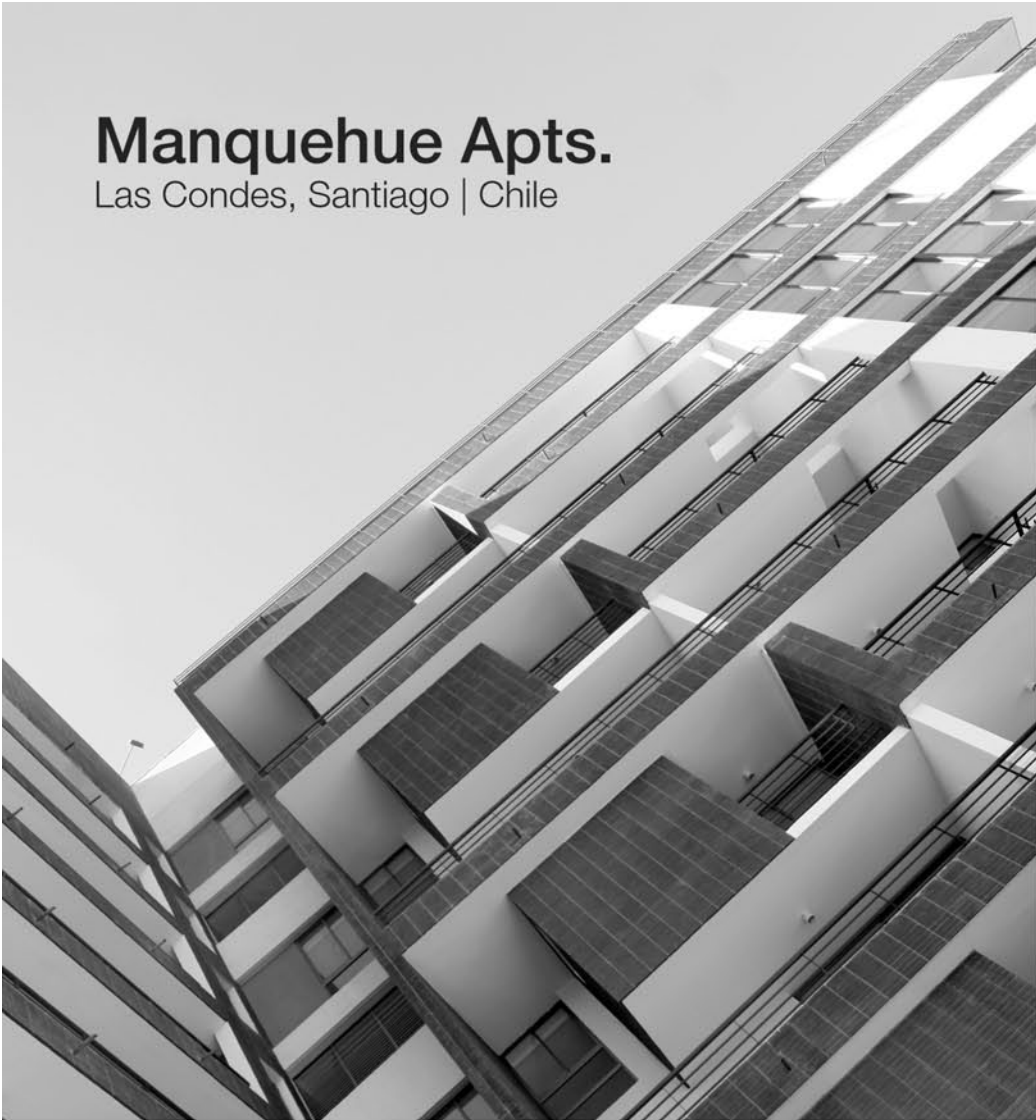
Section D-D



CONTAINER PROGRAM IN INTEGRATION WITH FUNCTIONALITY

Manquehue Apts.

Las Condes, Santiago | Chile



1 Living Room 2 Dining Room 3 Terrace 4 Family Room 5 Bedroom 6 Master Bedroom 7 Service Bedroom 8 Parity

Typical Floor Plan (3rd, 5th, 7th, 9th)



Section A-A

PROJECT INFO

Type
Private Housing

Context
Urban

Lot Surface
14,000 sq. ft.

Built Surface
110,000 sq. ft.

Main Structure
Concrete

Year
2004-07

BRIEF _ The main challenge was to dispose five 1500 square feet apartments in a single plan with a rational distribution. The limited possible perimeter length led us to propose an atypical floor plan with four single level apartments and two dual level apartments every other floor, in a symmetric efficient and plastically rich proposal. The result was a two-level modular repetition which became the singularity of the building. The distribution was achieved by disposing three apartment typologies and duplicating them in a double symmetry, resulting in identical (not symmetrical) pairs of facades. On ground level special attention was given to facilities.



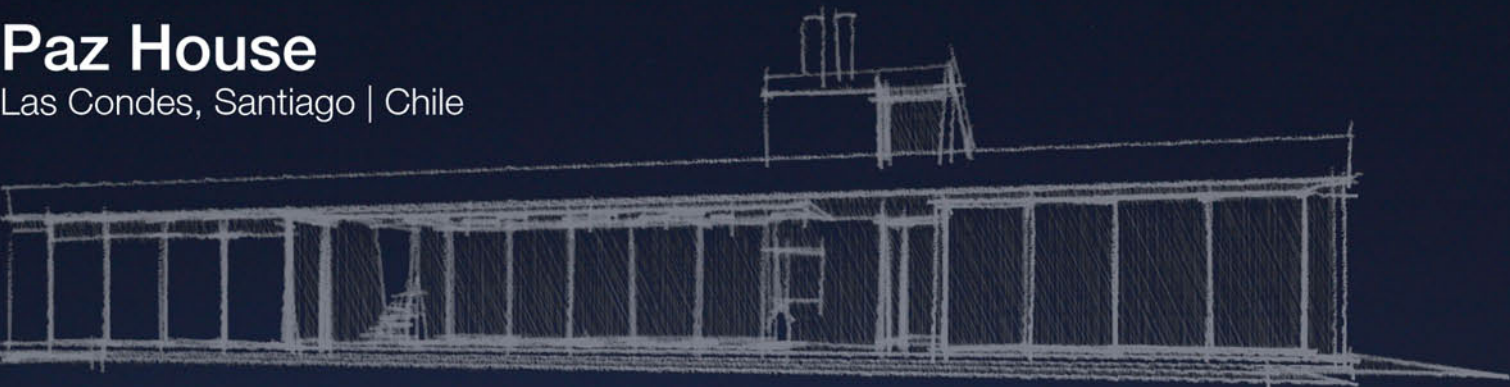
MANQUEHUE APTS

Eduardo Berlin Razmilic Associated Architects | Benjamín Paz, Paz Arquitectura



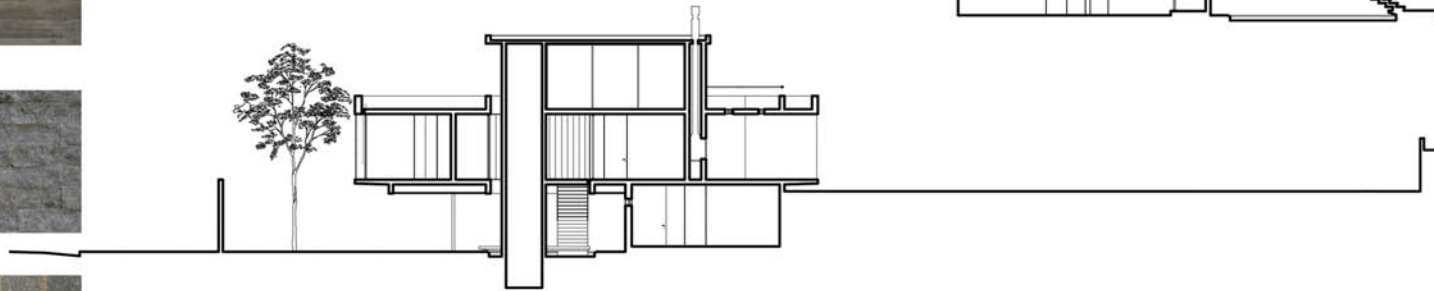
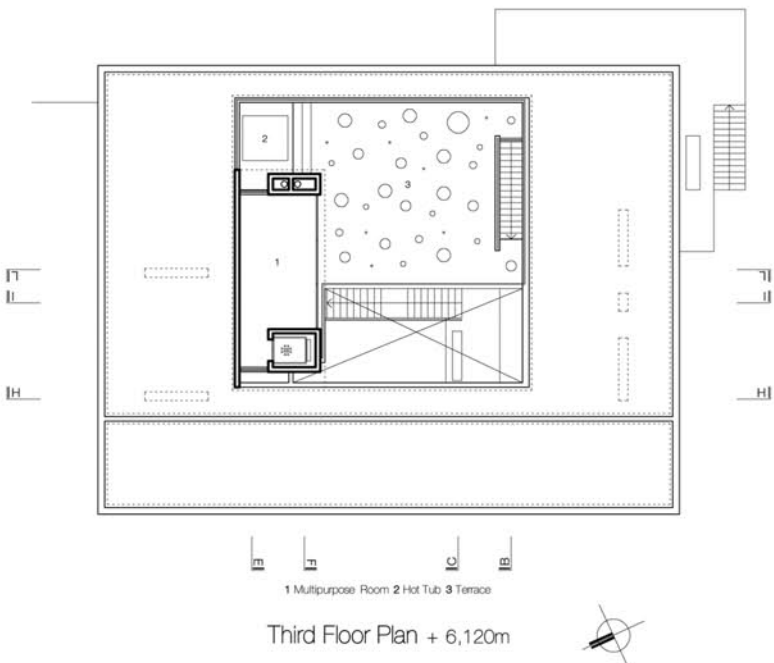
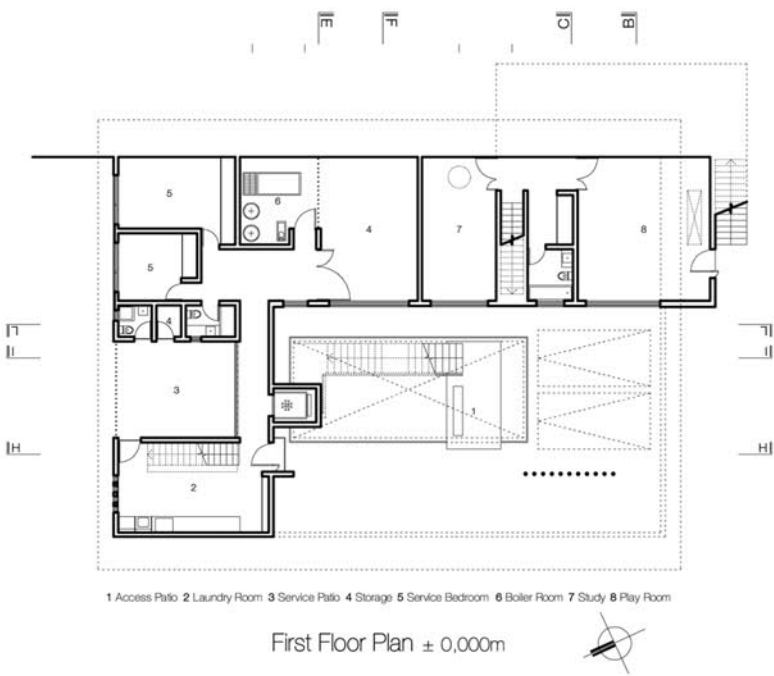
EFFICIENCY IN URBAN INVESTMENT

Paz House
Las Condes, Santiago | Chile



Night view of the east facade





PROJECT INFO

Type
Private House

Context
Urban

Lot Surface
17,900 sq. ft.

Built Surface
7,000 sq. ft.

Main Structure
Concrete

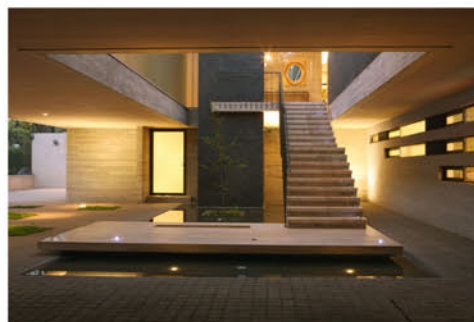
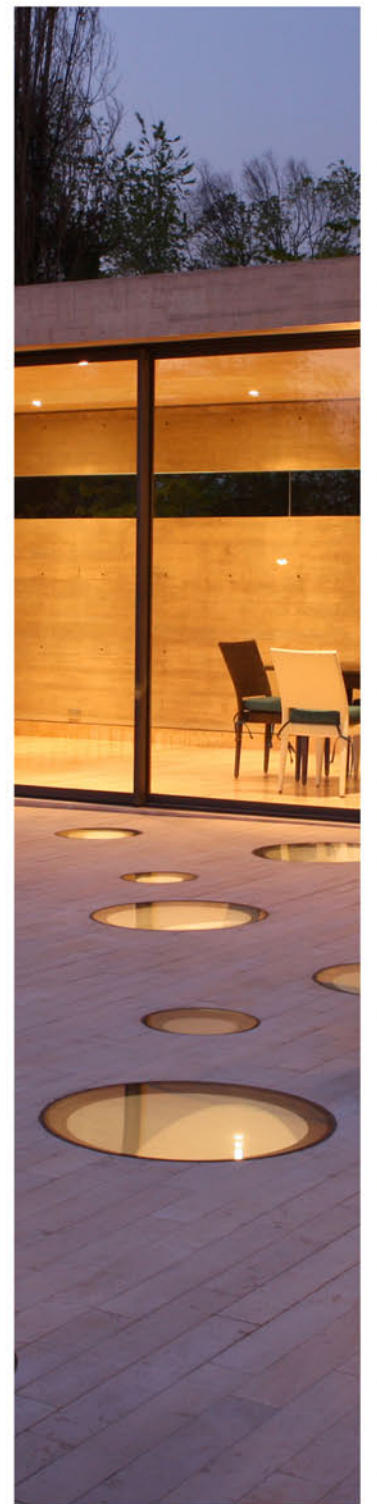
Year
2005-08

BRIEF_ House and garden develop 11 feet above street level, by means of an elemental ground operation that transforms the pre-existent rise into two horizontal planes, above and below. Both realms are articulated by subtle architectural operations. The lower court amounts to a plaza, sheltered by the upper level's volume, which directs the observer to the patio, open at its center and manifested by a water tank, creating the entrance through the staircase. The scale is preserved in a rational 5,000 square feet volume, evocative of more compact projects but with autonomies common to disaggregated plans. Pure spaces, studied plane perforation and neat structural work reflect particular accent in keeping the elements to a minimum.

PAZ HOUSE



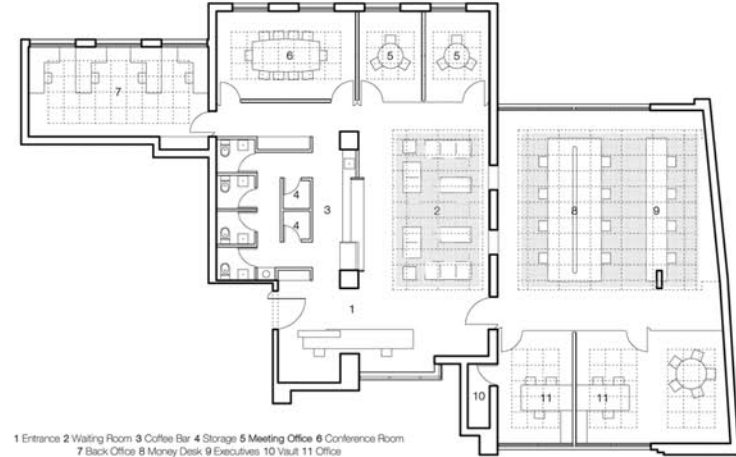
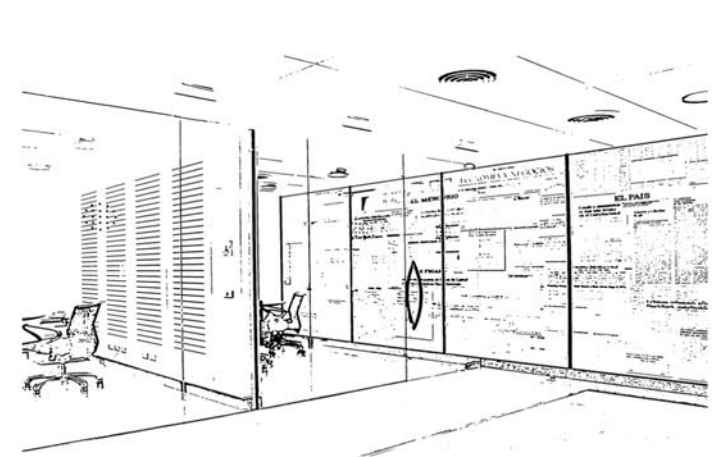
Eduardo Berlin Razmilic Associated Architects



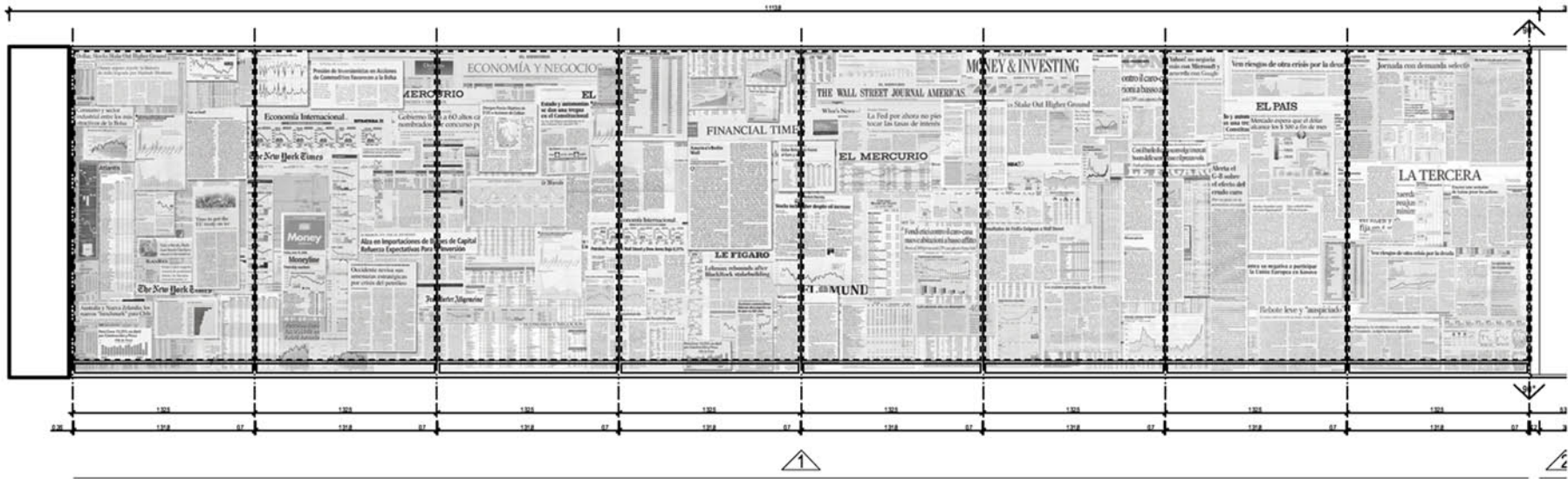
STONE ENVIRONMENTAL PROGRAM PATIO MARCH 2008 PROJECTS WEISS MANORNE ENOIS

Vantrust Headquarters

Las Condes, Santiago | Chile



Access Floor Plan



PROJECT INFO

VANTRUST HEADQUARTERS

Type
Office Building

Context
Urban

Lot Surface
.....

Built Surface
4,000 sq. ft.

Main Structure
.....

Year
2008

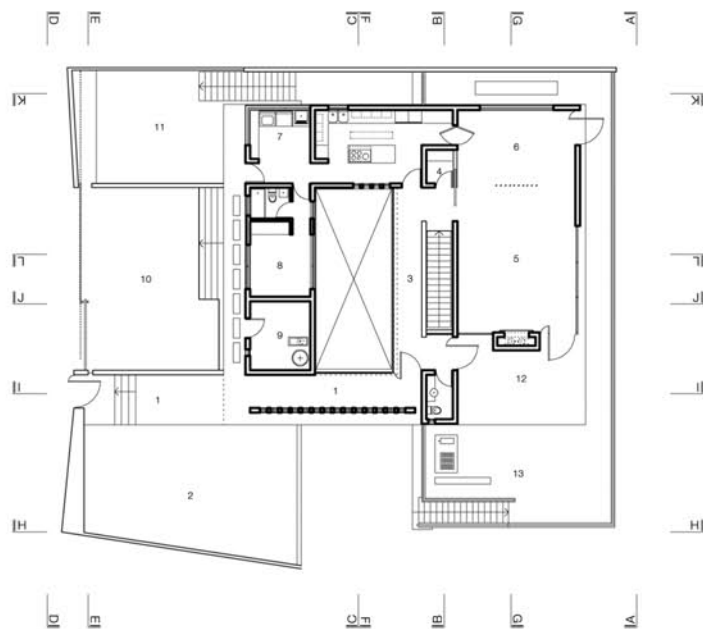
BRIEF_ The project assignment came two months before official opening. This rush was determinant in the final output as critical decisions had to be made in a very short period of time. A simple rational office space was proposed, using transparent glass walls, dark wooden floor, white drywall ceilings, warm lighting and simple low profile furniture design. We had special attention regarding acoustic issues (considering trading desk operations), so exceptionally a vinyl thread tile carpeting system and a top notch acoustic fiberglass fabric ceiling was proposed both below and above the trading desk area, minimizing noise. Information was to play a vital role, so built-in glass whiteboards were designed and a 40 feet graphic glass wall with financial news clip-pings decorates the access lobby.

Eduardo Berlin Razmilic Associated Architects | Luis Alberto Mantelli as Collaborator



PROGRAM SPACIALITY INFORMATION URBAN MINIMALISM PRESENT

Maristany House
Las Condes, Santiago | Chile



1 Entrance Walkway 2 Garden 3 Access Hall 4 Closet 5 Living Room 6 Dining Room 7 Laundry Room 8 Service Bedroom 9 Boiler Room / Storage 10 Parking 11 Service Patio 12 Terrace 13 Deck

Access Floor Plan + 3,060m



PROJECT INFO

Type
Private House

Context
Urban

Lot Surface
10,620 sq. ft.

Built Surface
3,500 sq. ft.

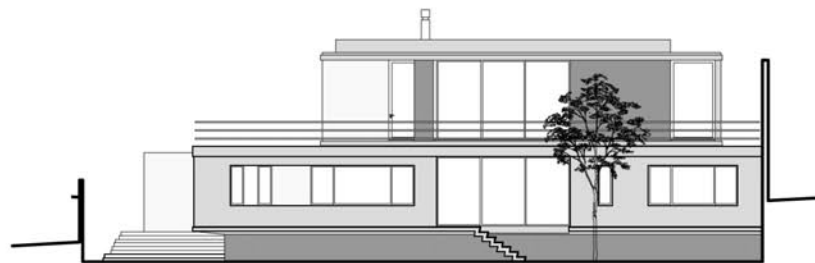
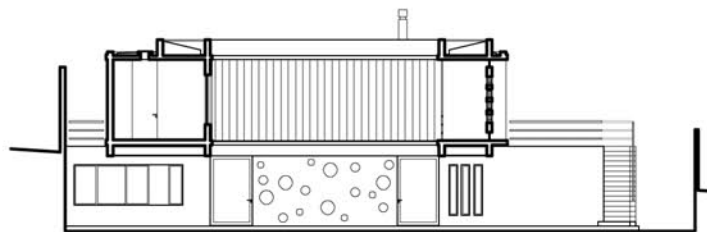
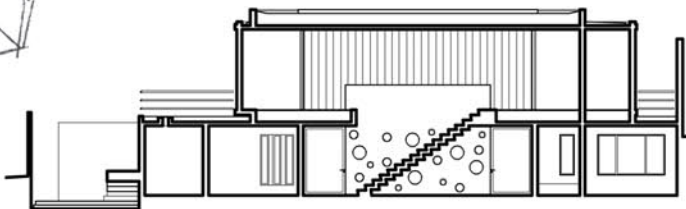
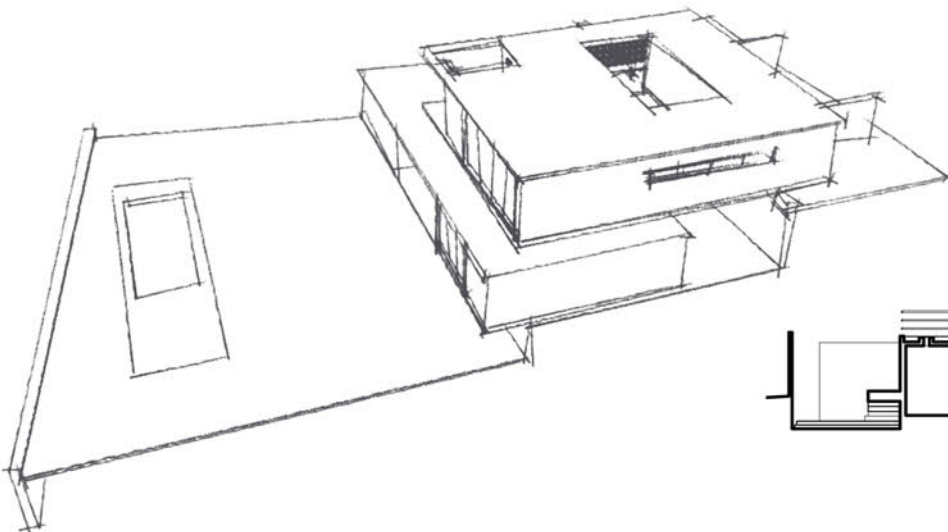
Main Structure
Concrete

Year
2007 >

BRIEF_ A considerable slope and top level site access were determinant in this house's planning with apparently contradictory demands: public program at street level, on the one hand, and direct connection (visual and physical) of it with the garden and neighboring park. We proposed a radical topographic operation: two main levels, street and garden defined by a single retaining wall. A loose lower level volume creates a patio between retaining wall and itself, inviting heat and sunlight. The main upper level, positioned as a bridge between both structures, articulates the house, integrating the patio to a single project and liberating space for a large open deck with great view of both garden and park and direct access to them through an exterior staircase.

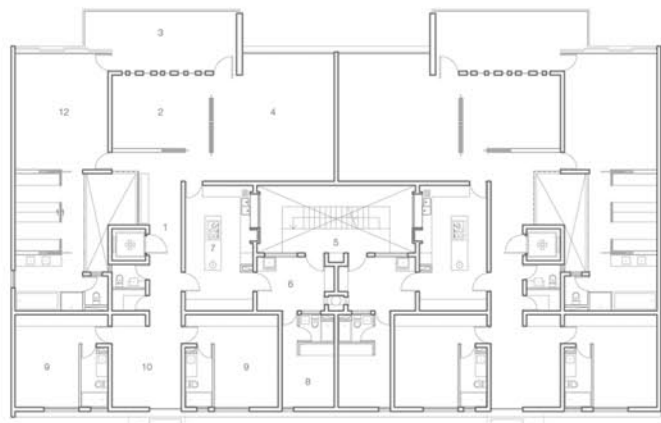
MARISTANY HOUSE

Eduardo Berlin Razmilic Associated Architects



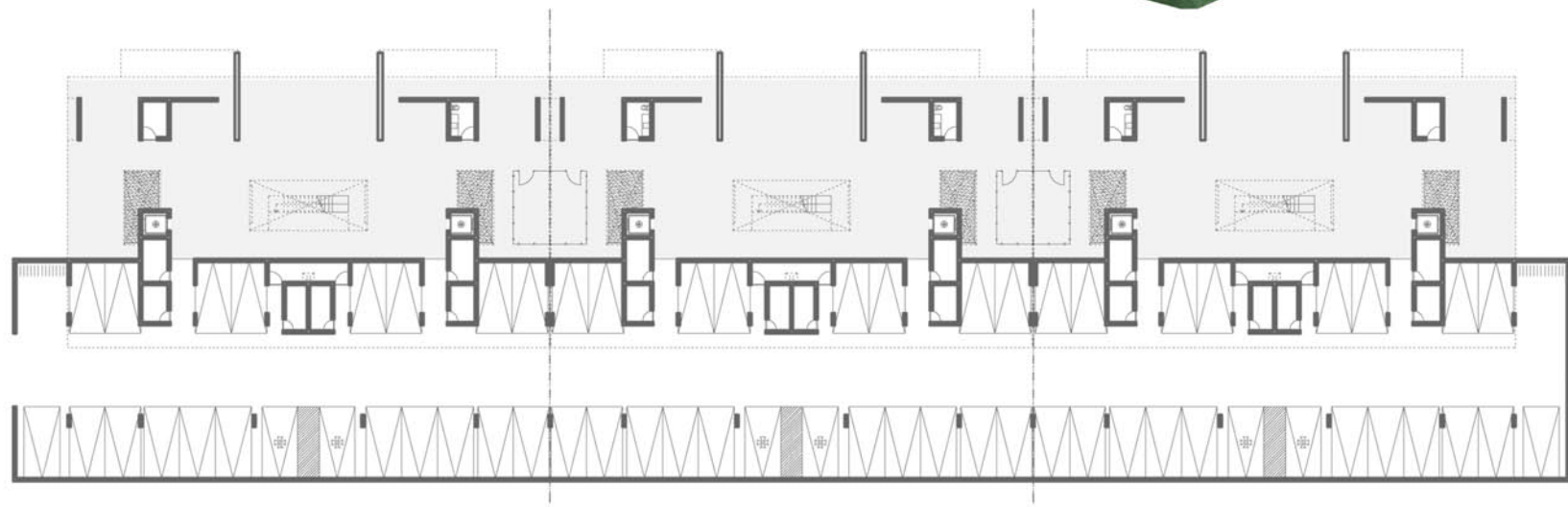
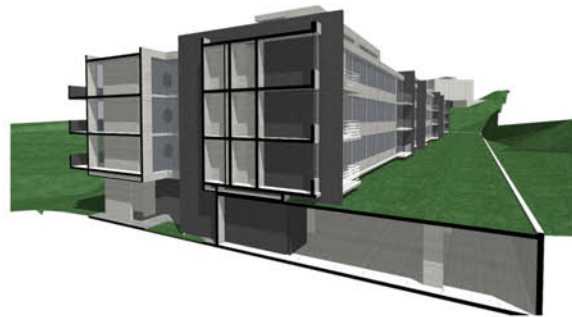
SMEI EFOLISOLIVAWERHOPRHSWEISASINEMORHNEFNOLIS

Quinchamalí Apts.
Las Condes, Santiago | Chile



1 Access Hall 2 Dining Room 3 Terrace 4 Living Room 5 Service Access 6 Pantry 7 Kitchen
8 Service Bedroom 9 Bedroom 10 Family Room 11 Walk-in Closet 12 Master Bedroom

Typical Apartment Plan



PROJECT INFO

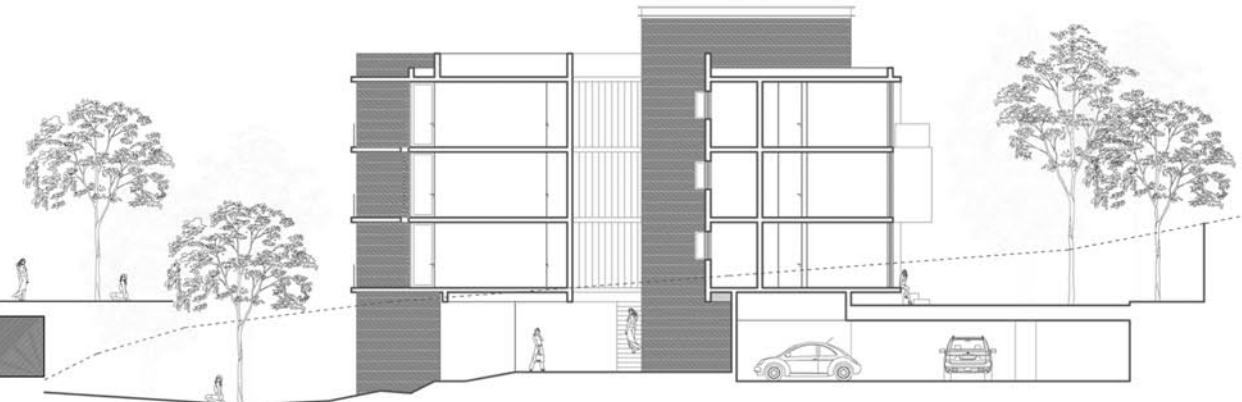
QUINCHAMALÍ APTS

Type
Private Housing
Context
Urban
Lot Surface
257,500 sq. ft.
Built Surface
107,000 sq. ft.
Main Structure
Concrete
Year
2008 >

BRIEF_ Commissioned to work on a preexisting 6 acre native suburban park, the challenge was to position two 300 feet long 4 level buildings with maximum integration to preexisting topography and minimal disturbance of the park premises. The park was defined by a narrow ravine and three locks; we initially decided to work on one side of the ravine in order to preserve at least one side unblemished. We positioned both building following preexisting elevation lines to avoid major excavations. The buildings are based on an atypical proposition: a first level which is partly underground and partly open as a main walkway, connected to parking space and directly to the park itself; several patio openings grant access to elevators and staircases.



Eduardo Berlin Razmilic Associated Architects | Ricardo Posada, Architect | Luis Alberto Mantelli as Collaborator



PARK ENVIRONMENT ECOLOGY PROGRAM PATIOS STOPS WATER

Published Works

2003 - 08

Books

Casas de Temporada - Vacation Houses
Ediciones ARQ;
Montserrat Palmer Trias Editor;
April 2003; pages 46-49.
Santiago , Chile;
Casa Uno - One House

Local Magazines

El Mercurio Newspaper - Vivienda & Decoración
Saturday April 5th, 2003; pages 22-29;
Santiago, Chile.
"PLANO PROPIO - EN BUSCA DE LIBERTAD"
Personal Plane - In Search of Freedom

Ambientes Magazine;
Ambientes; year 6 n° 34; July/August 2003, pages 48-51;
Santiago, Chile.
"PUNTO DE VISTA - EDUARDO BERLIN, PREDECIBLE E IMPREVISIBLE"
Viewpoint - Eduardo Berlin, Predictable But Unexpected

Caras Magazine;
Caras; year 16 n° 399; July 18th, 2003; pages 44-47
Santiago, Chile
"ESPECIAL - ARQUITECTOS JÓVENES CONSTRUYENDO SUEÑOS"
Special - Young Architects Building Dreams

El Mercurio Newspaper - Vivienda & Decoración
Saturday August 30th, 2008; pages 47-52;
Santiago, Chile.
"ESPECIAL CASAS - INNOVACIÓN SIN LÍMITES"
House Special - Limitless Innovation

Ambientes Magazine;
Ambientes; year 11 n° 65; September/October 2008, pages 80-81;
Santiago, Chile.
"MÁS CIUDAD: CASA PAZ INTIMIDAD ESPACIAL"
More City: Paz House - Spacial Intimacy

East Side Magazine;
East Side; year 7 n° 35; November/December 2008, pages 26-29;
Santiago, Chile.
"CASA PAZ - ARTICULACIÓN CREATIVA"
Paz House - Spacial Intimacy

International Magazines

Axxis Magazine;
Axxis; n° 126; July 2003; pages 16-23;
Bogotá, Colombia.
"ARQUITECTURA - MODERNA Y FUNCIONAL"
Architecture - Modern and Functional

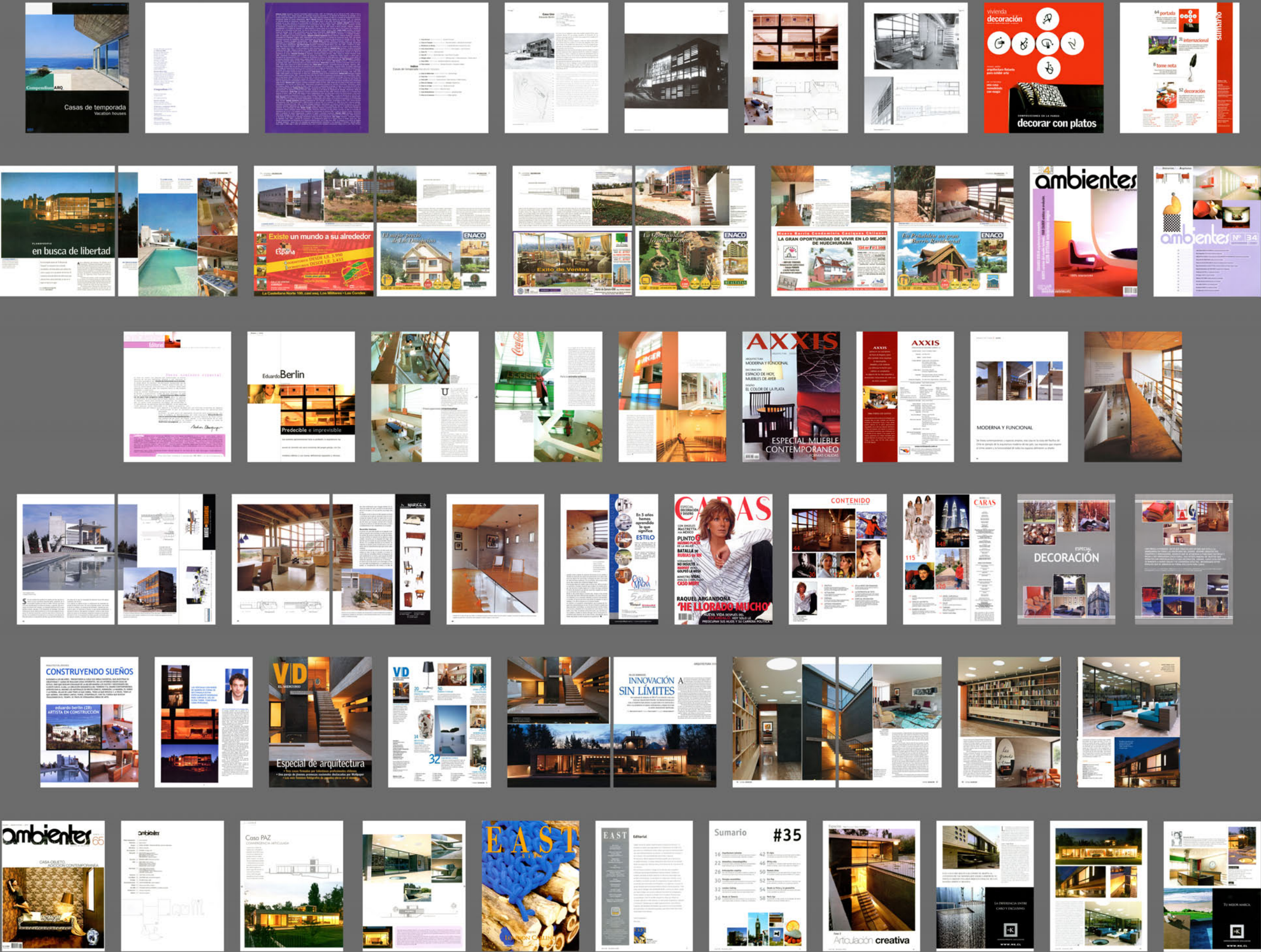
Blank Panama Magazine;
Blank Panama; n° 37; December 2008; page 18;
Panama City, Panama.
"ARQUITECTURA DE VANGUARDIA"
Avant - Garde Architecture

Web Pages

Arch Daily
House 2 - Eduardo Berlin Razmilic
Nico Saieh - Publisher
October, 2008
www.archdaily.com

Plataforma Arquitectura
Casa 2 - Eduardo Berlin Razmilic
David Basulto - Publisher
October, 2008
www.plataformaarquitectura.cl

World Architecture News
Unconventional Implantation - House 2 Eduardo Berlin Razmilic
James Forryan - Publisher
November 2008
www.worldarchitecturenews.com



Biography

December 2008

CONTACT INFORMATION

Name
Eduardo Andrés Berlín Razmlić

Profession
Architect | 2000
Pontificia Universidad Católica de Chile

Passport Number
10.317.895-9

Date of Birth
November 7th, 1974

Electronic Mail
e.berlin@berlin.cl

Web Page URL
www.berlin.cl / www.eduardoberlin.com

Home Address
Aurelio González 37 16 D-604
Vitacura, CP 763-0411
Santiago, Chile

Studio Address
Don Carlos 2939a O-913
Las Condes, CP 755-0171
Santiago, Chile

Telephone's
Work +56(2) 333 1093
Fax +56(2) 333 3780
Home +56(2) 813 2871
Mobile +56(9) 9837 1727

WORK EXPERIENCE | Placements

1997
Construction Placement
Sepco Ltd. Construction Company
Office Building project, 120-hour on-site placement, under supervision of Eduardo Weissbluth, Architect. Structural works task assignments.

1999
Public Agency Placement
Illustrious Municipality of Lo Barnechea, Santiago, Chile
At the Inspection Department, 120-hour placement under Building Department Director, Beatriz Buocicardi. Procedures and fieldwork regarding Construction Permits and Approvals.

1999
Professional Placement
Independent supervised professional work
Pre-design & Project for a Vacation House in Tunquén, Casablanca, Chile. Private commission under the supervision and faculty guidance of Architect Mathias Klotz Germain.

2000
Social Service Placement
Illustrious Municipality of Mejillones, Antofagasta, Chile
Under supervision of the Marcelino Carvajal, Mayor, 160-hour placement involving design project and on-site construction for the Renovation of The Fishermen's Bay in Hornitos Beach, and design project for renovation of Public Square "Arturo Prat" in downtown Mejillones to become the New Culture Square.

WORK EXPERIENCE | Architecture Studio | Work List

The studio has been committed, since 1999, to independent Architectural commissions. We have worked in the areas of private and collective housing, industrial and commercial projects, restoration and renovation, among others, with over 600,000 sq. ft. of built work, supervising its implementation, coordinating the different parts in the real estate, planning, design and construction processes.

1997-99
Fast Food Restaurants
Santiago, Concepción & Puerto Montt, Chile | ± 5,000 sq. ft.
Restaurantes Técnicos S.A., Corporate Client
14+ Locations. Projects for different brands of the company involving design and supervision; Mirador Interactive Museum (MIM), Plaza Oeste Shopping Mall, Plaza Vespucio Shopping Mall, Movioenter, Parque Arauco Shopping Mall, Apumanque Shopping Mall, among others.

2000-01
Weissbluth House
Rosario de Tunquén, Lote 37, Casablanca, Chile | ±2,500 sq. ft.
Mario Weissbluth S., Client

Architectural design, coordination of specialty projects, and construction supervision for a Vacation House in a remote setting.

2000-01
Alba Traditional Southern (Chiloé) Boat
Pesquera Elefante, Dalcahue, Chiloé, Chile | ± 2,000 sq. ft.
Giovanni de Zerega S., Client

Architectural design and supervision for a Traditional Tourist Wooden Yacht, with a 12 passenger capacity.

2000-01
Kilómetro Cero Food Court
Providencia, Santiago, Chile | ± 6,500 sq. ft.
Restaurantes Técnicos S.A., Corporate Client
Architectural design, supervision, furniture design and decoration for a mid-size Food Court in Turri Protected Buildings; 250 seat capacity.

2002
ELG Women's Boutique
Apumanque Mall, Las Condes, Santiago, Chile | ± 300 sq. ft.
Confecciones Sauer S.A., Corporate Client
Architectural design, supervision, furniture design and decoration for a women's small boutique at a mall.

2003-05
Chile España Oriente Apartment Building
Ñuñoa, Santiago, Chile | ± 100,000 sq. ft.
Inverpaz, Corporate Client
Architectural design, coordination of specialty projects, and construction supervision for a 9 level + 2 sublevel apartment building at an urban setting; 72 apartments.
* The studio was project designer and project leader associated with Paz Arquitectura, as supervisor. With Rodrigo Duque M., Associated Architect.

2003-05
General Motors, Davis Autos, Car Sales Pavilion
Vitacura, Santiago, Chile | ± 9,000 sq. ft.
Davis Autos S.A., Corporate Client
Architectural design, coordination of specialty projects, and construction supervision for a motor vehicle service center and sales pavilion.

2004-07
Manquehue 1515 Apartment Building
Las Condes, Santiago, Chile | ± 110,000 sq. ft.
Paz Corp, Corporate Client

Architectural design, coordination of specialty projects, and construction supervision for a 10 level + 2 sublevel apartment building at an urban setting; 42 apartments.

* The studio was project designer and project leader associated with Paz Arquitectura, as supervisor.

2004-07
Mosaik Apartment Building
Ñuñoa, Santiago, Chile | ± 280,000 sq. ft.
Paz Corp, Corporate Client

Architectural design, coordination of specialty projects, and construction supervision for a 25 level + 4 sublevel apartment building at an urban setting; 178 apartments.

* The studio was project designer and project leader associated with Paz Arquitectura, as supervisor.

2005-08
Paz House
Los Dominicos, Las Condes, Santiago, Chile | ± 7,000 sq. ft.
Andrés Paz D., Client

Architectural design, coordination of specialty projects, and construction supervision for a Private House in an urban setting.

2007
Freire House
La Reina, Santiago, Chile | ± 2,600 sq. ft.
Javier Freire B., Client

Architectural design, coordination of specialty projects, and construction supervision for a Private House renovation project in an urban setting.

2007
Van Trust Capital Stock Traders and Private Banking
Vitacura, Santiago, Chile | ± 3,200 sq. ft.
Vantrust Capital S.A., Corredores de Bolsa, Corporate Client

Architectural design, coordination of specialty projects, furniture design, decoration, and construction supervision for new office headquarters of a stock trader at a preexisting urban office building.

2007 >
Maristany House (current)
Quinchamalí, Las Condes, Santiago, Chile | ± 3,500 sq. ft.
Felpe Maristany D., Client

Architectural design, coordination of specialty projects, and construction supervision for a Private House in an urban setting. Currently under construction.

2008 >
Figari House (current)
Lo Curro, Vitacura, Santiago, Chile | ± 3,000 sq. ft.
Jorge Figari C., Client

Architectural design, coordination of specialty projects, and construction supervision for a Private House in an urban setting. Currently at design stage.

2008 >
Parque Quinchamalí Apartment Complex (current)
Quinchamalí, Las Condes, Santiago, Chile | ± 100,000 sq. ft.
Inmobiliaria Los Silos II S.A., Corporate Client

Architectural design, coordination of specialty projects, and construction supervision for a 3 level + 1 sublevel apartment building complex at an urban park setting; 36 apartments.

WORK EXPERIENCE | Architecture Studio | Project List

2003
Lush® Store Competition (not built)
Parque Arauco Mall, Las Condes, Santiago, Chile | ± 400 sq. ft.
Private Competition, Lush® Chile, Corporate Client
Architectural pre-design for a cosmetic's store at a mall.

2003
Fabrix Import Warehouse and Offices (not built)
Santiago, Santiago, Chile | ± 4,000 sq. ft.
Fabrix Import S.A., Corporate Client

Architectural design for headquarters and warehouse for a heavy machinery imports company at an urban location.

2003-04
Minimal Strip Center (not built)
Vitacura, Santiago, Chile | ± 40,000 sq. ft.
Self Commission
Architectural pre-design for an urban Strip Center.

2003
Automotora Siglo XXI Competition (not built)
Los Andes, Chile | ± 7,000 sq. ft.
Private Competition, Automotora Siglo XXI S.A., Corporate Client
Architectural pre-design for a for a motor vehicle service center and sales pavilion.

2003
Razmlić House (not built)
Lo Barnechea, Santiago, Chile | ± 4,000 sq. ft.
Jorge Razmlić T., Client
Architectural design and coordination of specialty projects, for a Private House in an urban setting.

2004
Radrigán House (not built)
La Reserva, Chicureo, Colina, Chile | ± 3,000 sq. ft.
Francisco Radrigán C., Client
Architectural pre-design for a Private House in an remote setting.

2004
Unión Obrera Restoration Initiative (not built)
Cerro Cárcel, Valparaíso, Chile | ± 60,000 sq. ft.
Secretary of Housing and Urbanism, Public Client
Architectural pre-design for the renovation and restoration of a protected building, housing over 30 low income families. With Pedro García del Barrio, Ricardo Posada Mery, Associated Architects.

2004
Loft House (not built)
Cerro Concepción, Valparaíso, Chile | ± 10,000 sq. ft.
Ricardo Posada Mery, Client & Associated Architect
Architectural pre-design for the renovation and restoration of a protected house, proposing 7 loft-type apartments for sale. With Ricardo Posada Mery, Associated Architects.

PUBLISHED WORK | Books

Casas de Temporada – Vacation Houses;
Ediciones ARQ; Montserrat Palmer Trías Editor;
April 2003; pages 46-49. Santiago, Chile;
Casa Uno – One House

PUBLISHED WORK | Local Magazines

El Mercurio Newspaper – Vivienda & Decoración;
Saturday April 5th, 2003; pages 22-29;
Santiago, Chile. "PLANO PROPIO – EN BUSCA DE LIBERTAD"
Personal Plane – In Search Of Freedom

Ambientes Magazine;
Ambientes; year 6 n° 34; July/August 2003; pages 48-51;
Santiago, Chile. "PUNTO DE VISTA – EDUARDO BERLIN, PREDECIBLE E IMPREVISIBLE"
Viewpoint – Eduardo Berlin, Predictable But Unexpected

Caras Magazine;
Caras; year 16 n° 399; July 18th, 2003; pages 44-47;
Santiago, Chile. "ESPECIAL – ARQUITECTOS JÓVENES CONSTRUYENDO SUEÑOS"
Special – Young Architects Building Dreams

El Mercurio Newspaper – Vivienda & Decoración;
Saturday August 30th 2008; pages 47-52;
Santiago de Chile. "ESPECIAL CASAS - INNOVACIÓN SIN LÍMITES"
House Special – Limitless Innovation

Ambientes Magazine;
Ambientes; year 11 n° 65; September/October 2008; pages. 80-81;
Santiago, Chile. "MÁS CIUDAD: CASA PAZ – INTIMIDAD ESPACIAL"
More City: Paz House – Spatial Intimacy

East Side Magazine
East Side; year 7 n° 35; November/December 2008; pages 26-29;
Santiago, Chile. "CASA PAZ – ARTICULACIÓN CREATIVA"
Paz House – Creative Articulation

PUBLISHED WORK | International Magazines

Axxis Magazine;
Axxis n° 126; July 2003; pages 16-23;
Bogotá, Colombia. "ARQUITECTURA – MODERNA Y FUNCIONAL"
Architecture – Modern And Functional

Blank Panama Magazine;
Blank Panama n° 37; December 2008; page 18;
Panama City, Panama. "ARQUITECTURA DE VANGUARDIA"
Avant-Garde Architecture

PUBLISHED WORK | Web Pages

Arch Daily
House 2 – Eduardo Berlín Razmlić
Nico Saieh – Publisher
October, 2008

<http://www.archdaily.com/7680/house-2-eduardo-berlin-razmlic/>

Plataforma Arquitectura
Casa 2 – Eduardo Berlín Razmlić
David Basulto – Publisher
October, 2008
<http://www.plataformaarquitectura.cl/2008/10/16/casa-2-eduardo-berlin-razmlic/>

World Architecture News
Unconventional Implantation – House 2 Eduardo Berlín Razmlić
James Foryan – Publisher
November, 2008
http://www.worldarchitecturenews.com/index.php?fuseaction=wanappn.projectview&upload_id=10634

ACADEMIC EXPERIENCE | Teaching

2008
Universidad Diego Portales
School of Architecture
1st Semester Design Studio – Landscape & Context
Assistant Professor with Rodrigo Duque Motta, head Professor.

Universidad Diego Portales
School of Architecture
2nd Semester Design Studio – Landscape & Context
Assistant Professor with Rodrigo Duque Motta, head Professor.

2009
Universidad Diego Portales (scheduled for March, 2009)
School of Architecture
8th 9th Semester Design Studio – Collective Housing Studio
Assistant Professor with Rodrigo Duque Motta, head Professor.

EDUCATIONAL BACKGROUND | University

1993-1999
Pontificia Universidad Católica de Chile
School of Architecture, Art and Design
Santiago, Chile
Licensure in Architecture
Two Vows of Distinction

2000
Pontificia Universidad Católica de Chile
School of Architecture, Art and Design
Santiago, Chile
Degree – Professional Architect
Two Vows of Distinction

EDUCATIONAL BACKGROUND | High School

1989-1992
The Grange School
British School in Santiago, Chile
High School Diploma
IB Certificate (International Baccalaureate) in:
Economics, Spanish HL, English HL, Physics, World History and Theory of Knowledge

EDUCATIONAL BACKGROUND | Preparatory School

1980-1988
The Grange School
British School in Santiago, Chile
Kindergarten & Preparatory School

Notes & Comments

This image shows a single sheet of white paper with horizontal ruling lines. The lines are evenly spaced and run across the width of the page. There are no margins, text, or other markings on the paper.

